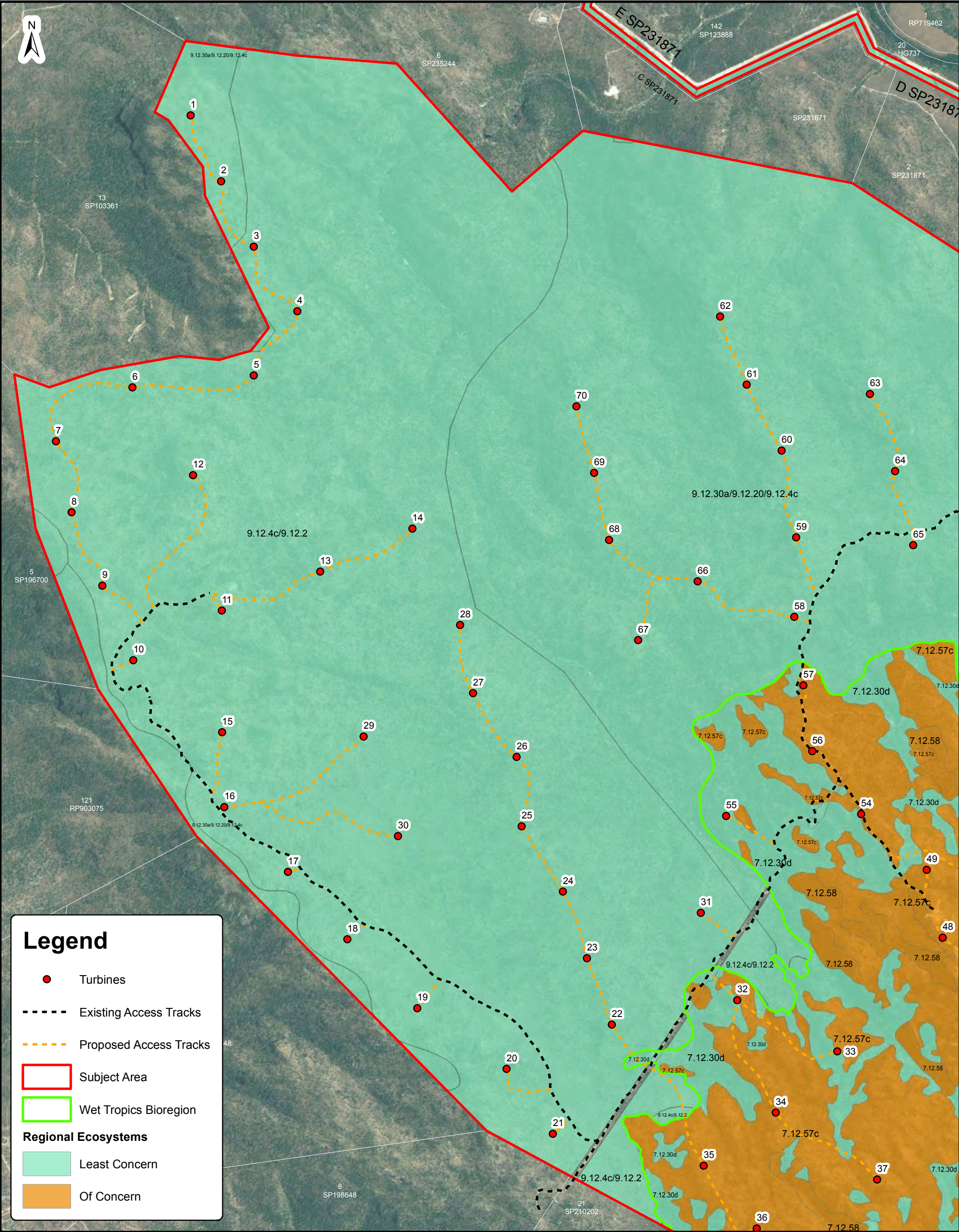


Appendix D

Regional Ecosystem Mapping - Einasleigh Uplands Bioregion Section



Legend

- Turbines
- Existing Access Tracks
- - - Proposed Access Tracks
- Subject Area
- Wet Tropics Bioregion

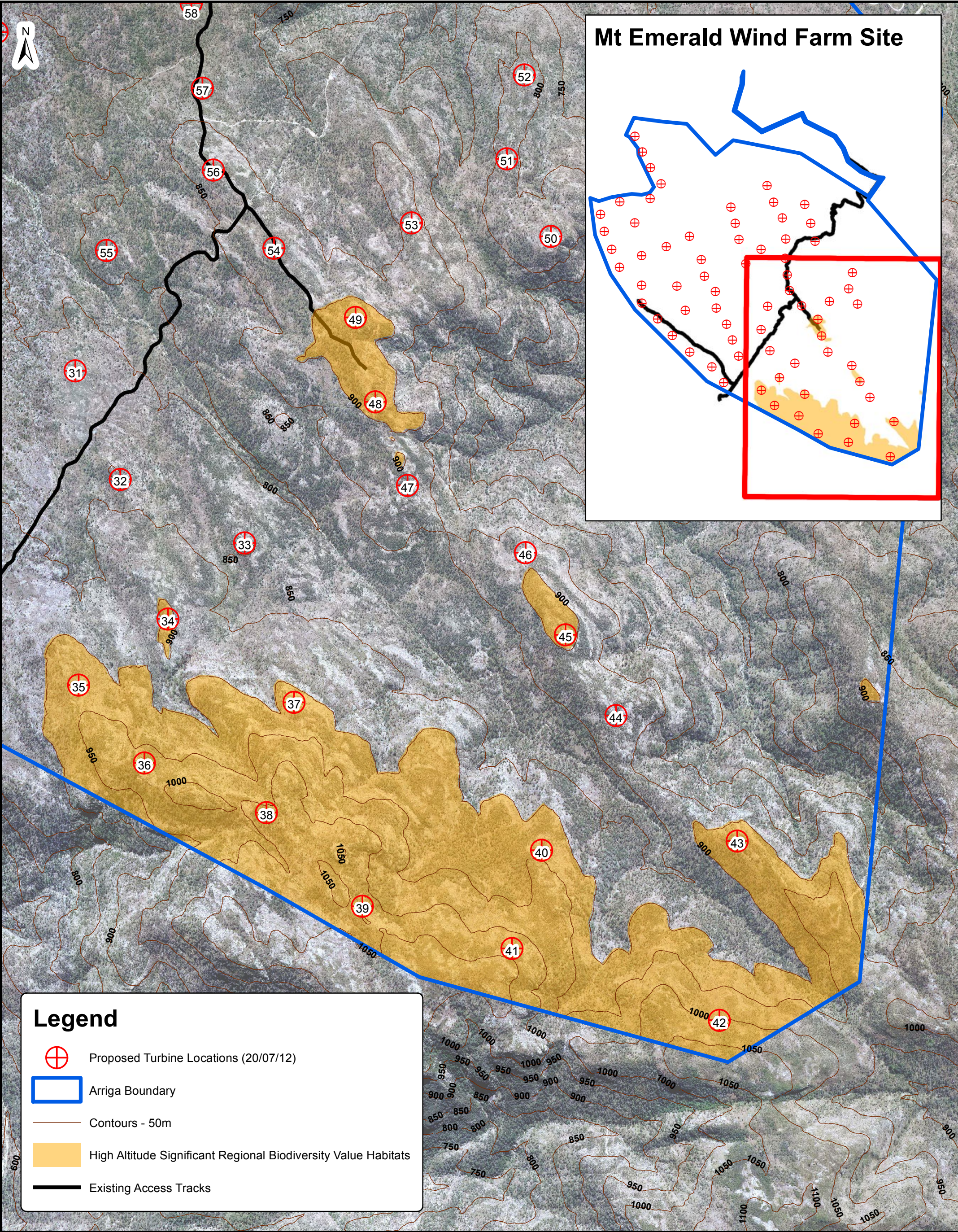
Regional Ecosystems

- Least Concern
- Of Concern






<div><div><div>0150300450600</div><div>Meters (A3)</div></div><div><div><div>DIGITAL CADASTRAL DATA BASE - BOUNDARY INFORMATION.</div><div>REGIONAL ECOSYSTEM VERSION 6 DATA</div><div>DERM AERIAL PHOTOGRAPHY.</div><div>Based on or contains data provided by the State of Queensland (Department of Environment and Resource Management) 2010. In consideration of the State permitting use of this data you acknowledge and agree that the State gives no warranty in relation to the data (including accuracy, reliability, completeness, currency or suitability) and accepts no liability (including without limitation, liability in negligence) for any loss, damage or costs (including consequential damage) relating to any use of the data. Data must not be used for direct marketing or be used in breach of the privacy laws.</div><div>Regional ecosystem linework compiled at scale greater than 1:100,000, except in designated areas, where a compilation scale of 1:50,000 is available. Linework should be used as a guide only.</div><div>The positional accuracy of RE data mapped at a scale of 1:100,000 is +/-100 metres.</div><div>The aerial photography used in this plan has not been rectified.</div><div>The image has been overlaid as a best fit on the boundaries shown and position is approximate only.</div><div>Date of Capture: August 2006.</div><div>Draft SP248138 - area to be opened as road</div><div>(DERM ref 2011.006477)</div></div></div></div>		<div><div>Project Manager</div><div>M. Jess</div><div>Compiled by</div><div>RMS</div><div>Map Projection</div><div>MGAz55</div><div>Map Datum</div><div>GDA94</div><div>File Reference</div><div>PR100246-138.mxd</div><div>Sheet Number</div><div>1 of 1</div></div>	<div><div>Client</div><div>Ratch Australia Corporation Limited</div><div>Title</div><div>Regional Ecosystem Mapping Einasleigh Uplands</div></div>	<div><div><div><div>RPS Australia East Pty Ltd</div><div>ACN 140 292 762</div><div>135 Abbott St</div><div>PO Box 1949</div><div>CAIRNS QLD 4870</div><div>T +61 7 4031 1336</div><div>F +61 7 4031 2942</div><div>W rpsgroup.com.au</div></div><div><div>RPS</div><div>© COPYRIGHT PROTECTS THIS PLAN</div><div>Unauthorised reproduction or amendment not permitted.</div><div>Please contact the author.</div></div></div><div><div>SCALE (A3)</div><div>1:15,000</div><div>DATE</div><div>5/07/2013</div><div>DRAWING NO.</div><div>PR100246-138</div><div>ISSUE</div></div></div>
---	--	---	--	--

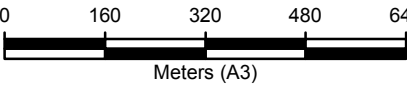
Appendix E

High Altitude Significant (900 m) Regional Biodiversity Value Habitats



Legend

-  Proposed Turbine Locations (20/07/12)
-  Arriga Boundary
-  Contours - 50m
-  High Altitude Significant Regional Biodiversity Value Habitats
-  Existing Access Tracks



Project Manager	M. JESS
Compiled by	J. MIDDLETON
Map Projection	UTM 55S
Map Datum	WGS84
File Reference	PR100246-137.mxd
Sheet Number	1 of 1

Client	RATCH AUSTRALIA PTY LTD
Title	High Altitude Significant Regional Biodiversity Value Habitats



© COPYRIGHT PROTECTS THIS PLAN
Unauthorised reproduction or amendment not permitted.
Please contact the author.

SCALE (A3)	DATE	DRAWING NO.	ISSUE
1:12,074	06/05/2013	PR100246-137	1

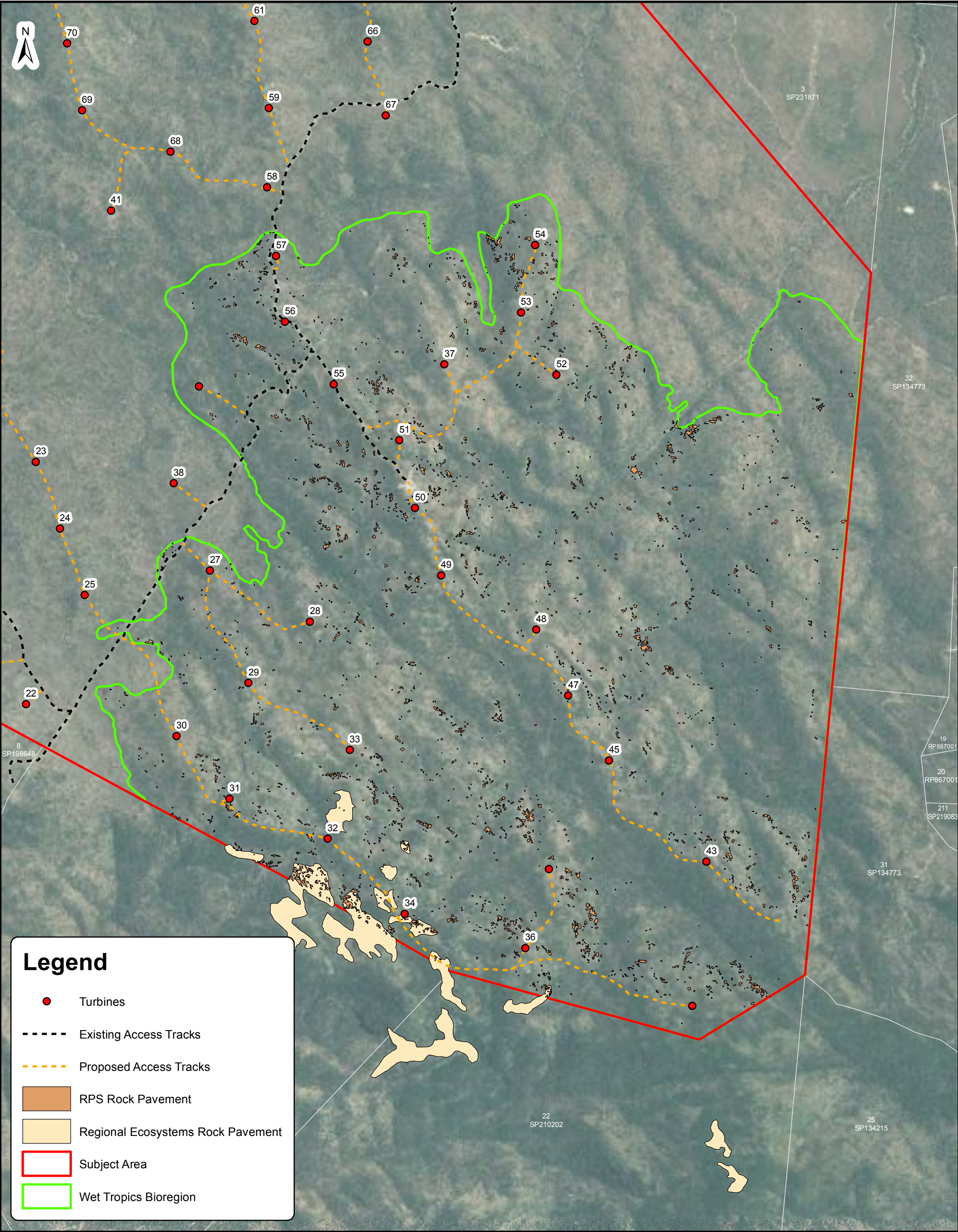
RPS Australia East Pty Ltd
ACN 140 292 762

135 Abbott St
PO Box 1949
CAIRNS QLD 4870

T +61 7 4031 1336
F +61 7 4031 2942
W rpsgroup.com.au

Appendix F

Rock Pavement and Outcrop Mapping - Wet Tropics Bioregion Section



Legend

- Turbines
- Existing Access Tracks
- - - Proposed Access Tracks
- RPS Rock Pavement
- Regional Ecosystems Rock Pavement
- Subject Area
- Wet Tropics Bioregion

0100200300400500

Meters (A3)

DIGITAL CADASTRAL DATA BASE - BOUNDARY INFORMATION.
REGIONAL ECOSYSTEM VERSION 6 DATA
DERM AERIAL PHOTOGRAPHY.
Based on or contains data provided by the State of Queensland (Department of Environment and Resource Management) 2010. In consideration of the State permitting use of this data you acknowledge and agree that the State gives no warranty in relation to the data (including accuracy, reliability, completeness, currency or suitability) and accepts no liability (including without limitation, liability in negligence) for any loss, damage or costs (including consequential damage) relating to any use of the data. Data must not be used for direct marketing or be used in breach of the privacy laws.
Regional ecosystem linework compiled at scale greater than 1:100,000, except in designated areas, where a compilation scale of 1:50,000 is available. Linework should be used as a guide only. The positional accuracy of RE data mapped at a scale of 1:100,000 is +/-100 metres.
The aerial photography used in this plan has not been rectified.
The image has been overlaid as a best fit on the boundaries shown and position is approximate only.
Date of Capture: August 2006.
Draft SP248138 - area to be opened as road
(DERM ref 2011/006477)

Project Manager	D. Finney
Compiled by	RMS
Map Projection	MGAz55
Map Datum	GDA94
File Reference	PR100246-132.mxd
Sheet Number	1 of 1

Client	Ratch Australia Corporation Limited
Title	Rock Pavement Mapping

RPS

© COPYRIGHT PROTECTS THIS PLAN
Unauthorised reproduction or amendment not permitted.
Please contact the author.

SCALE (A3)

1:15,000

DATE

18/4/2013

DRAWING NO.

PR100246-132

ISSUE

RPS Australia East Pty Ltd
ACN 140 292 762

135 Abbott St
PO Box 1949
CAIRNS QLD 4870

T +61 7 4031 1336
F +61 7 4031 2942
W rpsgroup.com.au